

Ex4all GmbH

Telefon: 09341 89542 0
Fax: 09341 89542 29
E-mail: info@ex4all.de
Web-site: www.ex4all.de



ATEX II2GD-IP66 explosion-proof ACB telephone, shock-proof IK10 with auto fault-detection & audio test model TLA569T & TLA569TV



Explosion-proof ATEX II2GD-IP66 industrial wall mounting analogue ACB telephone, with shock-proof IK10 aluminium body and heavy-duty IP66-IP66 handset with stainless-steel cord, extended keypad with single metal made buttons, model **TLA569T** and **TLA569TV**

Electrical characteristics:

Powered by telephone line:	12÷60 Vdc
Ringing voltage:	25÷100 V _{EFF}
Dialling:	DTMF
Electronic Bell:	up to 95dB@1m, adjustable
Hook:	magnetic, high protection
Programmable:	100% programmabile remotely by DTMF
MTBF:	> 180.000 hours
MTTR:	3 minutes

Extended Keypad:

14 keys keypad, with single aluminium buttons, with double function activated by the button Fn:

- 12 buttons (*, #, 0,1...9)
- R (flash), RP (last number redial)
- Pre-memorized call buttons (M1÷M8)
- Volume adjustment V+, V-
- Hook key, or hands-free mode (on TLA569TV only)
- Door opening button, on DTMF password
- Red LED indicating "on line" or "incoming call"
- Blue LED indicating fault conditions
- Noise cancelling circuit

Optional functions:

- Local audio test & remote monitoring
- Hands-Free Full-Duplex
- Booster amplifier for external loudspeaker (supplied@12Vcc)
- Auxiliary hook contact
- Call repeating relay for external repeaters
- Remote command relay on password DTMF
- Remote diagnostic software TelDia®

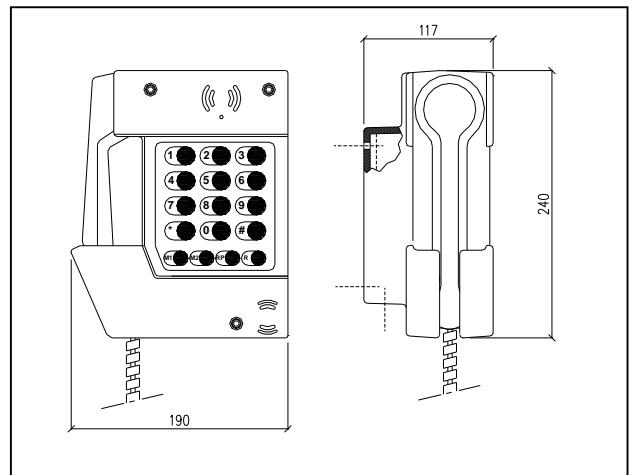
Protection mode:ATEX II2G - EEx emib[ib] IIC T6
Max. / min. amb. Temp:-20 °C / + 40°C
Protection mode:ATEX II2D - EEx emib [ib] IIC T5
Max. / min. amb. Temp:-40°C ÷ +60°C
Material:aluminium 5mm/RAL 2003
Handset: aluminium 2mm/black
Handset's cord:stainless steel, 200kg resistance
Mounting:.....on wall
Wiring:screw terminals Ø2,5mm
Dimensions:190x240x117mm
Weight:3,6 kg
IP-rating & Shock-Resistance:.....IP66 & IK10
Cables inlets: ...2 holes Ø20mm, with cableglands for cables Ø5÷8mm

Automatic Fault-detection

Automatic periodical test of all the functions and main devices of the telephone, including audio test of microphone and earpiece. The state of service is indicated by the flashing blue LED. A Fault-Relay module is available on demand.

Missing or out of order handset:

The hands-free version (TLA457TV) still operates also when the handset is missing or out of service.



Installation, Operation and Maintenance Procedures

- Open the pivoting front panel removing the three screws
- Pass the cables through the cable glands being sure that the cable fit with the rubber gasket
- Connect the telephone wires at the screw terminals as indicated in the operator's book
- Make a functional test calling another extension and asking to be re-called
- Adjust the volume of the bell (see operator's book)
- Adjust the sensitivity of the microphone (see operator's book)
- Close the front panel paying attention to the position of the gaskets

This equipment is supplied with a 2 year warranty against defective workmanship